

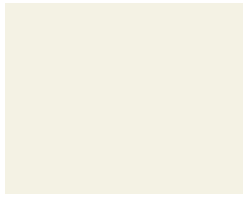


Construction Metal Products Inc.

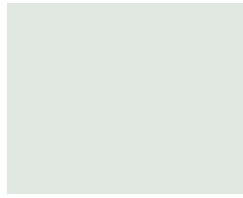


2204 West Front Street, Statesville, NC 28612, 704-871-8704
1608 Executive Ave., Myrtle Beach, SC 29577, 843-427-0427

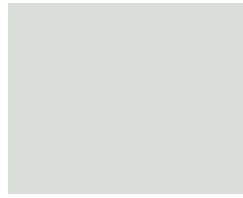
The Solar Reflective Index (SRI) as per ASTM E1980 is noted next to each color name. All colors are direct deposit paint samples. Do not use this sheet to color match. Call your representative for a painted metal sample.



Snowdrift | 93



Regal White | 78



Stone White | 82



Bone White | 83



Sandstone | 71



Almond | 78



Sierra Tan | 30



Medium Bronze | 31



Mansard Brown | 26



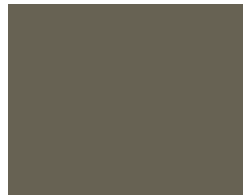
Dark Bronze | 25



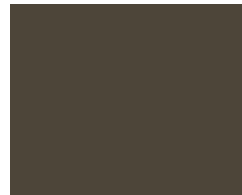
Ash Gray | 32



Dove Gray | 54



Slate Gray | 40



Musket Gray | 32



Charcoal Gray | 29



Aged Copper | 53



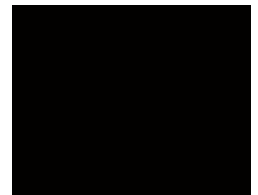
Patina Green | 55



Classic Green | 30



Hartford Green | 24



Black | -1



Slate Blue | 29



Royal Blue | 26



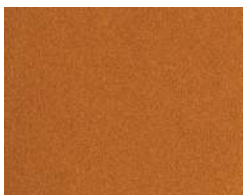
Banner Red | 43



Colonial Red | 34



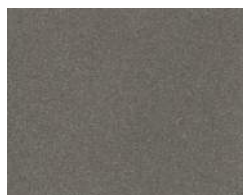
Terra Cotta | 37



Copper Penny | 45



Bright Silver | 61



Pre-Weathered Galvalume | 39



AZ55 Acrylic Galvalume

Custom colors and/or color matching is available subject to minimum volume criteria. Pricing will be dependent on project requirements.

In testament to the high quality of ColorKlad® and AlumaKlad™, a written warranty is available upon request, for qualifying applications. Available at no charge, this warranty covers peeling, color fade, chalking and paint integrity. Reference actual warranty for details and conditions. Check suitability of use in potentially corrosive atmospheres. * Acrylic AZ55 is not covered under the ColorKlad® warranty. Metallics and Premiums may be priced higher than standard colors.



Construction Metal Products Inc.



2204 West Front Street, Statesville, NC 28612, 704-871-8704
 1608 Executive Ave., Myrtle Beach, SC 29577, 843-427-0427



ColorKlad® — available in a premium cool coating — is the field-proven, time-tested leader in metal roofing. ColorKlad is made of a PVDF coating containing 70% Kynar 500® or Hylar 5000® resin over a high-quality primer, permanently bonded to commercial quality, extra smooth Grade 50 AZ50 Galvalume® or Galvanized G90 sheet or coil.

AlumaKlad™ — available in a premium cool coating — maintains design integrity and attractive appearance when design, climatic and/or atmospheric conditions call for aluminum. AlumaKlad is made of a PVDF coating containing 70% Kynar 500® or Hylar 5000® resin over a high-quality primer, permanently bonded to 3105-H24 aluminum sheet or coil.

COOL COLORS	SRI	24ga		.032"		.040"	.050"	.063"
		20"	48"	20"	48"	48"	48"	48"
AZ55 Acrylic Galvalume*		●	●					
Aged Copper	53	●	●	●	●			
Almond	78	▲	●	▲	●	●	●	
Ash Gray	32	●	●					
Bone White	83	▲	●	▲	●			
Charcoal Gray	29	●	●	●	●			
Classic Green	30	●	●	▲	●	●		
Colonial Red	34	▲	●					
Dark Bronze	25	●	●	●	●	●	●	●
Dove Gray	54	●	●	●	●			
Mansard Brown	26	●	●	▲	●	●	●	
Musket Gray	32	●	●					
Black	-1	●	●	●	●			
Medium Bronze	31	●	●	●	●	●	●	●
Patina Green	55	▲	●					
Regal White	78	▲	●	●	●			●
Sandstone	71	▲	●			●	●	
Sierra Tan	30	●	●	●	●	●	●	
Slate Blue	29	▲	●					
Slate Gray	40	●	●	●	●			
Snowdrift	93	●	●	●	●			
Stone White	82	●	●	●	●	●		
Terra Cotta	37	▲	●					
Premium / Metallic								
Banner Red	43	▲	●					
Bright Silver	61	●	●	●	●	●	●	
Copper Penny	45	●	●	●	●			
Hartford Green	24	●	●				●	
Preweathered	39	●	●	●	●			
Royal Blue	26	●	●	●	●			

Items marked with (▲) are available but will be specially processed from 48.375" master coil and the drop coil will ship as part of order.

AlumaKlad ColorKlad™

Kynar500® is a registered trademark of Arkema, Inc.
 Hylar5000® is a registered trademark of Solvay Solexis, Inc.
 GALVALUME® is an internationally recognized and registered trademark of BIEC International Inc., and some of its licensed producers, and a trademark of Dofasco Inc. in Canada.